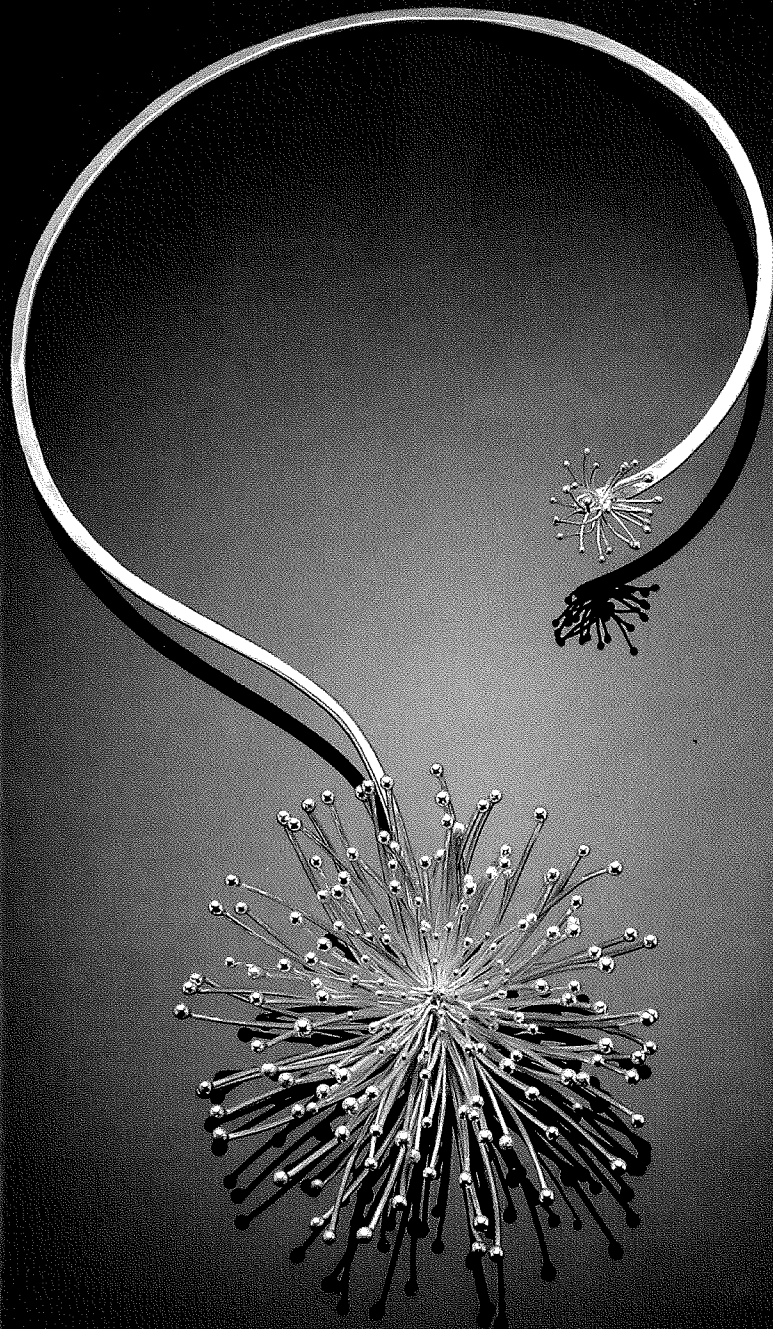


# Form and Flower



DESIGN ELEMENTS  
GREAT AND SMALL IN  
PRECIOUS METAL  
BY SUSAN LAUGHLIN

## Metalworker

Paulette Werger creates works of subtle design and intriguing shapes inspired by botanical forms in her garden. Her canvas is metal, and the translated design elements are hammered out or embossed with a roller — finally transformed for the body or the table with an eye for simplicity.

The neck piece shown here is part of an allium series, where the pom pom bloom of the plant is envisioned elegantly into tactile wire. Werger, who has a B.S. in painting and an M.F.A. in art metal, enjoys botanical drawing too.

In May she will have an open house in her studio at the AVA Galleries in Lebanon showing her latest combination work. She teaches metalwork across the country and at League of New Hampshire Craftsmen shops in Littleton, Meredith and Center Sandwich.

Werger is a perennial Living with Crafts winner at the League's Sunapee fair each August. Her work has been exhibited widely, including the Chazen Museum of Art, the Renwick Gallery of Craft, the Hood Museum of Art and Fuller Craft Museum. Her jewelry and tableware can be found at every League shop and the McGowan Gallery in Concord.

**Paulette Werger**, Lebanon  
paulettewerger.com  
(603) 448-5484

webextra // More images at [nhmagazine.com](http://nhmagazine.com)